

Geoteric AI Faults Installation Guide

Windows 10 installation

Geoteric AI Faults was formally known as Geoteric Collaborative AI.

The Geoteric AI Faults installation will enable functionality for running AI Faults – 2D Networks together with a relevant 2D Networks license (GEOTERIC_AI_FAULTS_2D_NETWORKS).

From Geoteric 2021.2 onwards, the Geoteric AI Faults installation will enable functionality for running AI Faults – 3D Networks together with a relevant 3D Networks license (GEOTERIC_AI_FAULTS_3D_NETWORKS).

Prerequisites

- When installing Geoteric 2021.1 or 2021.2 make sure that previous versions of Geoteric are uninstalled
- 1. Uninstall Geoteric 2020 or any earlier version of Geoteric and install either Geoteric 2021.1 or 2021.2.
- 2. Uninstall Geoteric AI Faults 2020 (Geoteric Collaborative AI 2020) before installation of either Geoteric AI Faults 2021.1 or 2021.2.
- Ensure there are relevant licenses to run both Geoteric and the Geoteric AI Faults Server

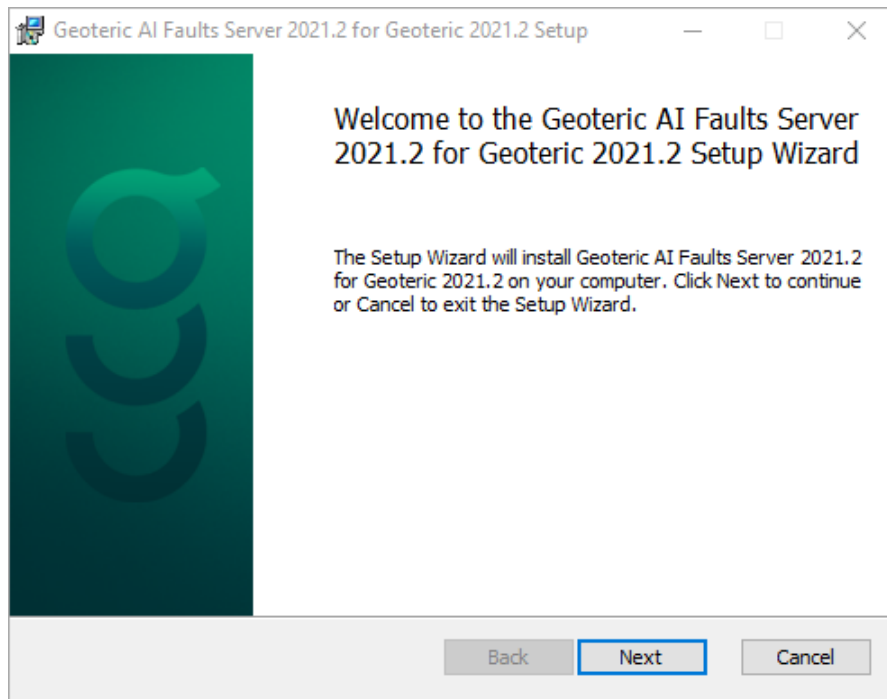
The Geoteric versions must be consistent between both Geoteric and the Geoteric AI Faults Server; otherwise, the AI Fault processing will not function. This is true between any minor patch versions (e.g. .1 or .2 etc) or major (e.g. 2020 or 2021 etc) releases of Geoteric.

Please see the Trouble Shooting section at the end of this guide for examples of issues related to non-matching versions.

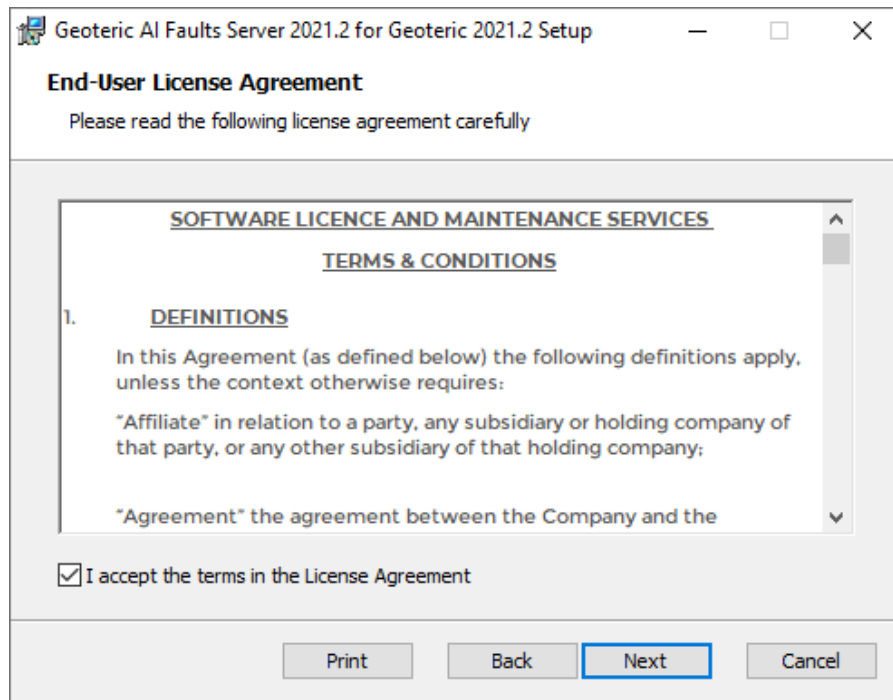
Installation

After downloading the `AI_Fault_Server.2021.2_Release.msi` executable, double click on it to begin the installation wizard.

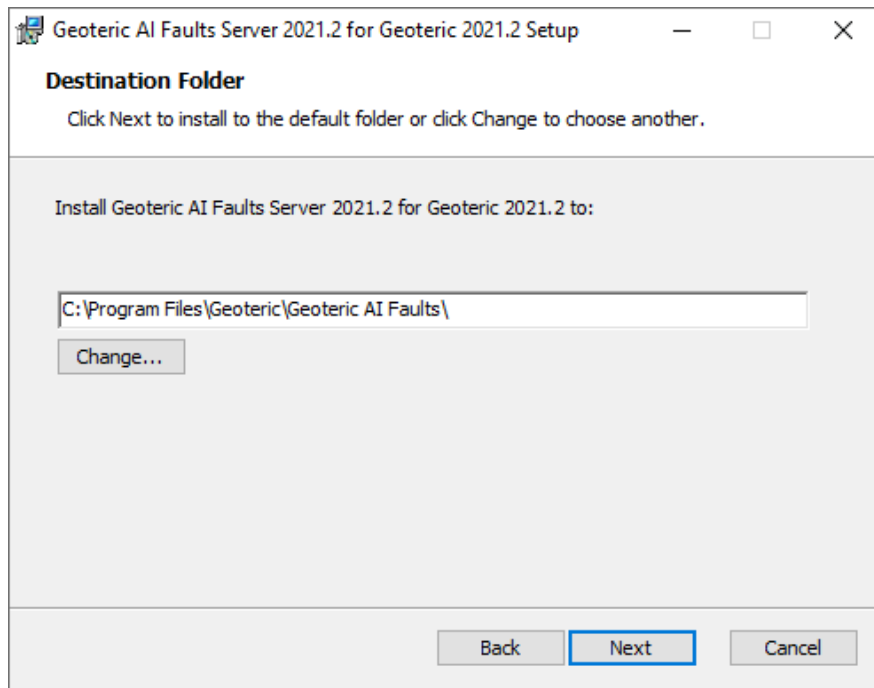
The installation will require administrator privileges to run.



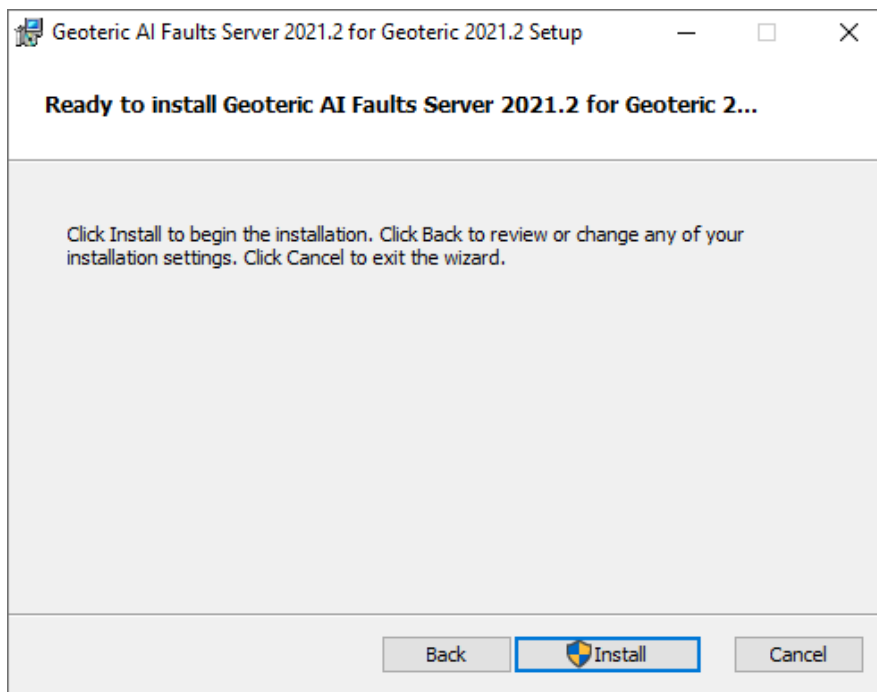
Click “Next” for the License Agreement.



Tick the box to accept the terms of the License Agreement and click “Next”.

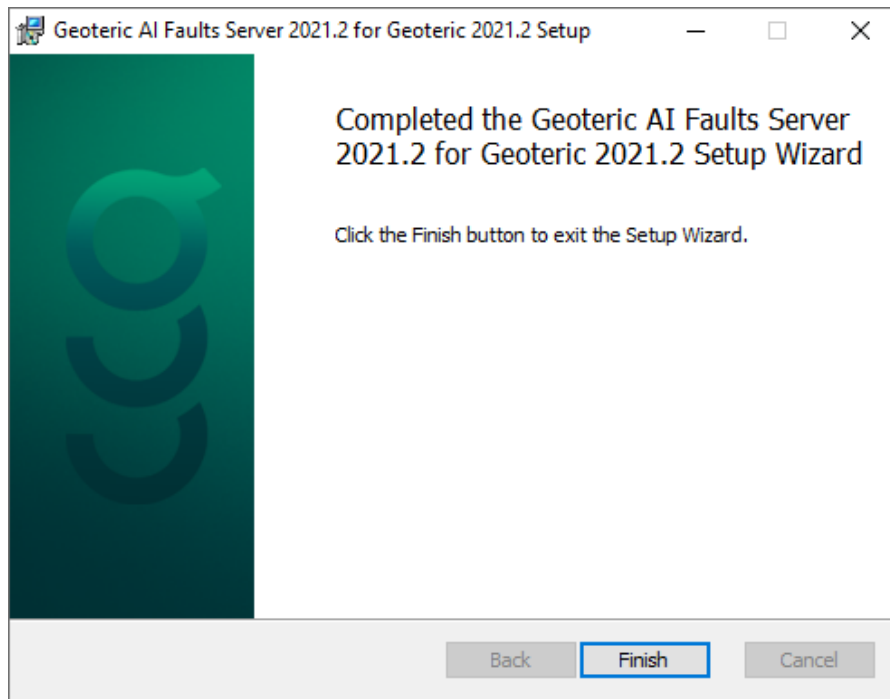
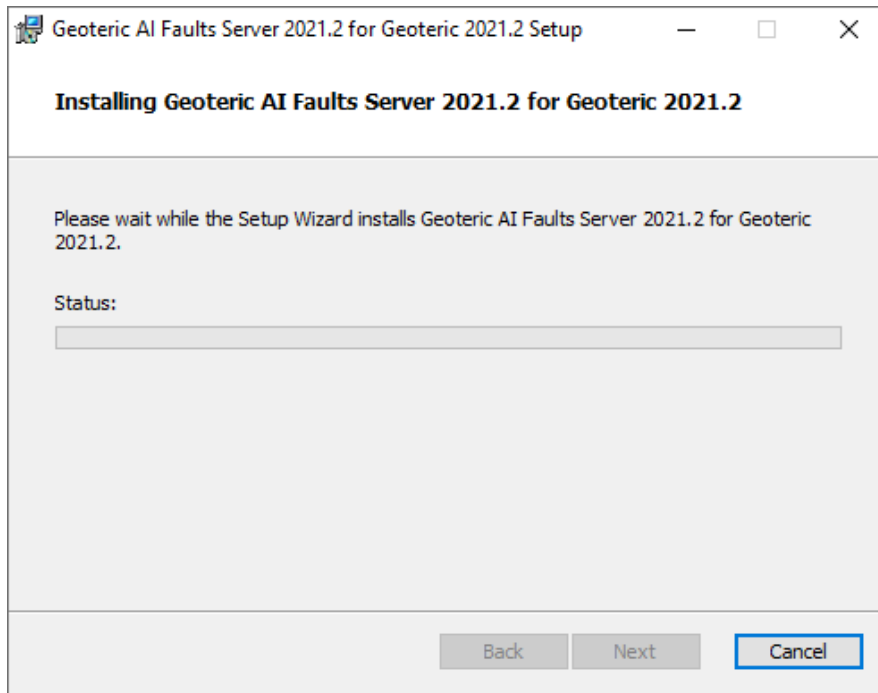


Click “Next” to install Geoteric AI Faults server to the specified location.



Click “Install” to begin the installation.

Note that administrator privileges will be needed at this point to install Geoteric AI Faults Server.



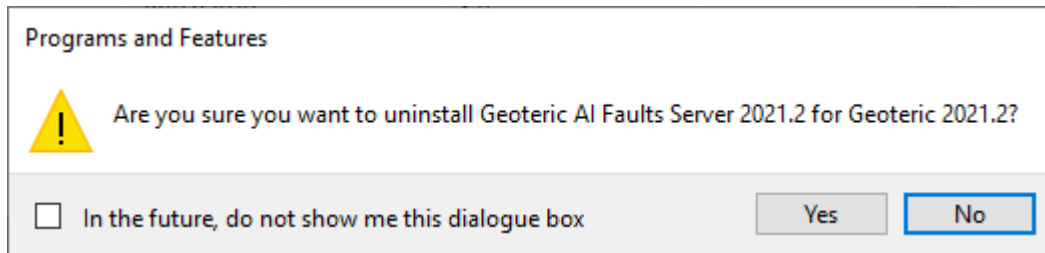
Click "Finish" to complete the installation. The Geoteric AI Faults server will be available to run as soon as a process is required (on the initiation of functionality within Geoteric) or when manually selecting the server to start from within Geoteric.

Uninstall

To uninstall the Geoteric AI Faults Server, go into the Control Panel > Programs and Features and uninstall the “Geoteric AI Faults Server 2021.2 for Geoteric 2021.2” from the program list.

Note that administrator privileges will be needed to uninstall Geoteric AI Faults Server.

After acceptance of the following dialogue:



The Geoteric AI Faults Server will be uninstalled.

Trouble Shooting

Versions must be consistent between both Geoteric and Geoteric AI Faults Server; otherwise, the AI Fault processing will not function. This is true between any minor patch versions (e.g. .1, .2 or .3 etc) or major (e.g. 2020, 2021 or 2022 etc) releases of Geoteric. See table below for examples.

Examples which do not work:

Do not install Geoteric 2021.1 and Geoteric AI Faults 2020.2 together.

Do not install Geoteric 2020.1 and Geoteric AI Faults 2021.2 together.

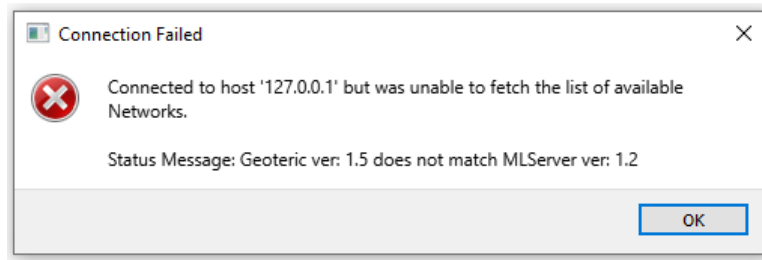
The table below indicates the correct and incorrect associations.

Geoteric	Geoteric AI Faults Server	Result
2020.1	2020.1	✓
2020.2	2020.2	✓
2021.1	2021.1	✓
2021.2	2021.2	✓
2020.1	2020.2	✗
2020.2	2020.1	✗
2020.1	2021.1	✗
2021.1	2020.1	✗
2020.1	2021.2	✗
2021.2	2020.1	✗
2020.2	2021.1	✗
2021.1	2020.2	✗
2020.2	2021.2	✗
2021.2	2021.1	✗

When Geoteric 2021 AI Faults server has not been updated

If Geoteric 2021 has been installed, but Geoteric 2020 AI Faults server remains without an upgrade, then the versions will throw a mismatch error when AI Faults is processed.

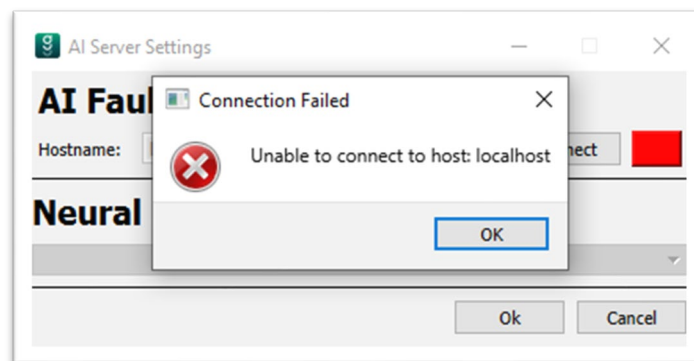
The same is true between a mismatch of any minor patch versions or major releases of Geoteric.



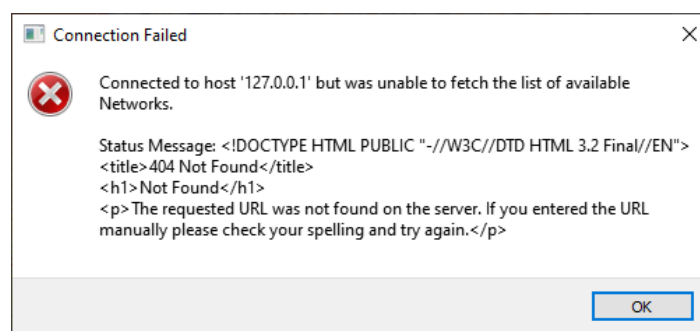
When Geoteric 2021 AI Faults is installed, but Geoteric 2020 has not been updated

If Geoteric 2021 AI Faults server has been installed, but Geoteric itself has not been updated to Geoteric 2021, then the AI Faults process will throw an error as shown below.

The same is true between a mismatch of any minor patch versions or major releases of Geoteric.



Example with Geoteric 2020.2 and Geoteric AI Faults 2021.1

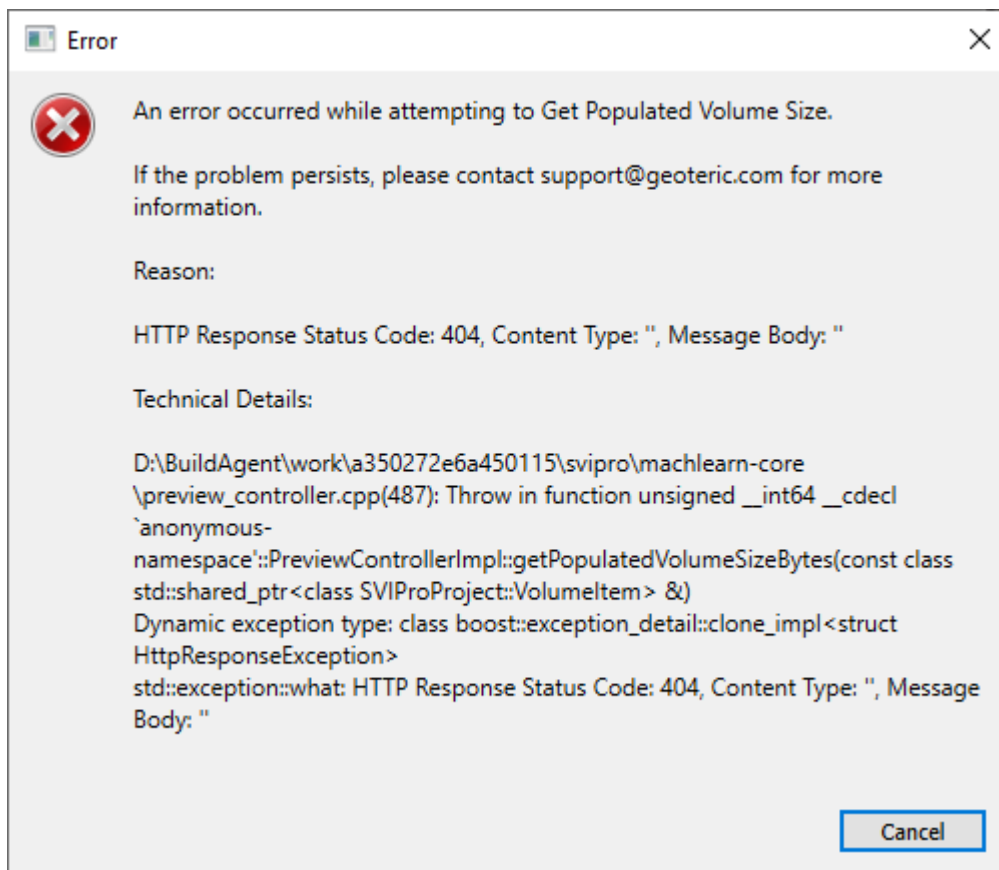


Example with Geoteric 2020.2 and Geoteric AI Faults 2021.2

The AI Faults process is contained within Geoteric and must have a single GPU available with sufficient memory and of sufficient CUDA compute level (see separate recommended specifications documents.) This GPU should not be used for Geoteric CUDA processing or any graphics processing.

When Geoteric 2021.1 AI Faults is installed, and Geoteric 2021.2 is installed

If Geoteric 2021.1 AI Faults Server has been installed, and Geoteric 2021.2 is installed, then the AI Faults – 3D Networks process will throw an error as shown below.



Example with Geoteric 2021.2 and Geoteric AI Faults 2021.1