

Geoteric AI Faults Installation Guide

Windows installation

Geoteric AI Faults was previously named Geoteric Collaborative AI.

The Geoteric AI Faults installation enables the functionality for running AI Faults – 2D Networks together with a relevant 2D Networks license (GEOTERIC_AI_FAULTS_2D_NETWORKS).

From Geoteric 2021.2 onwards, the Geoteric AI Faults installation also enables the functionality for running AI Faults – 3D Networks together with a relevant 3D Networks license (GEOTERIC_AI_FAULTS_3D_NETWORKS) and the Geoteric Process Manager installer.

Prerequisites

- Make sure that previous versions of Geoteric are uninstalled
 1. Uninstall previously installed Geoteric
 2. Uninstall previously installed Geoteric AI Faults (or Geoteric Collaborative AI 2020 for earlier versions)
 3. Uninstall previously installed Geoteric Process Manager if running Geoteric AI Faults – 3D Networks
- Ensure there are relevant licenses to run both Geoteric and the Geoteric AI Faults Server for Geoteric 2022.1
- Ensure there are relevant licenses to run the Geoteric Process Manager if running Geoteric AI Faults – 3D Networks

The Geoteric versions must be consistent between both Geoteric and the Geoteric AI Faults Server; otherwise, the AI Fault processing will not function. This is true between any minor patch versions (e.g. .1 or .2 etc) or major (e.g. 2020, 2021 or 2022 etc) releases of Geoteric.

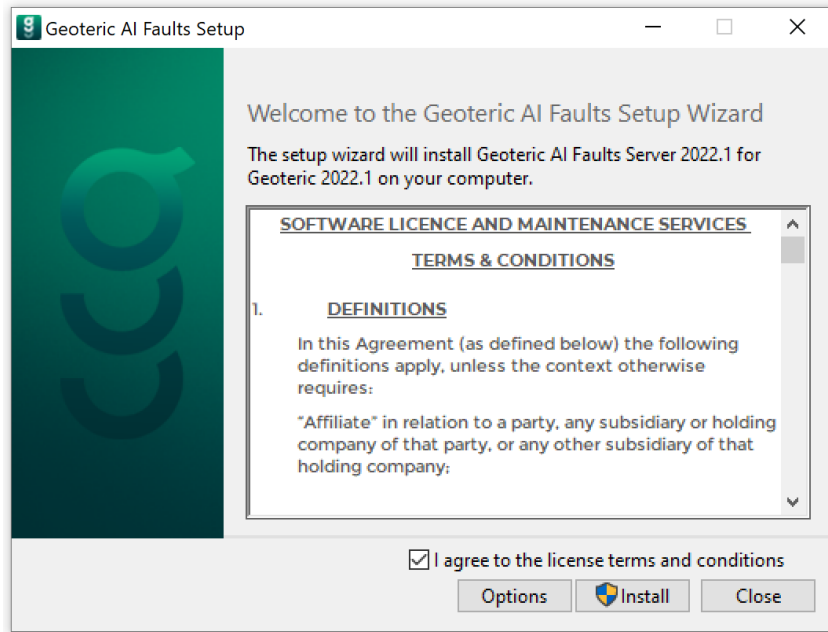
Please see the Trouble Shooting section at the end of this guide for examples of issues related to non-matching versions.

Geoteric 2022.1 has been made more robust in that the AI Fault Server 2021.2 may function when installed together with Geoteric 2022.1 and the Geoteric Process Manager however upgrades such as to TensorFlow 2 and new networks will not be available.

Installation

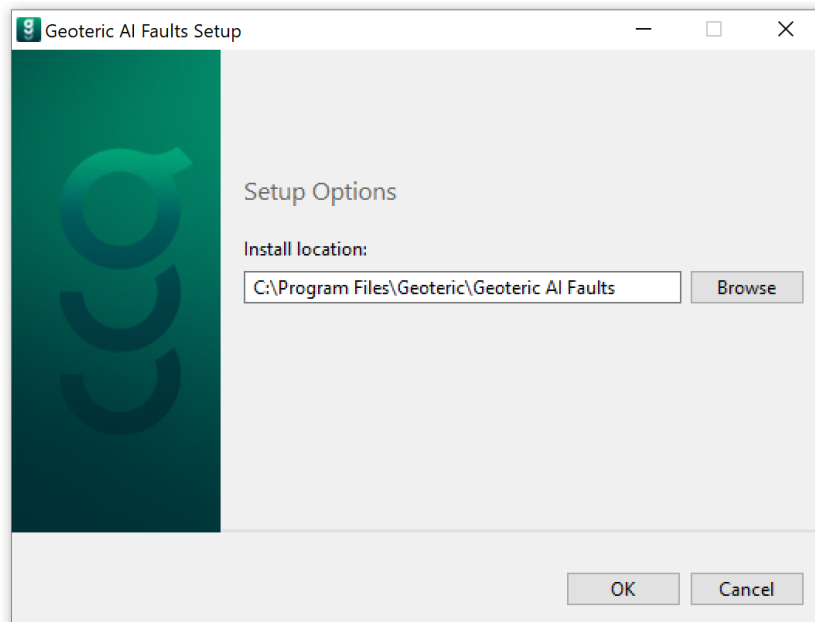
After downloading the **Geoteric_AI_Faults_Server.2022.1_Release.exe** executable, double click on it to begin the installation wizard.

The installation will require administrator privileges to run.



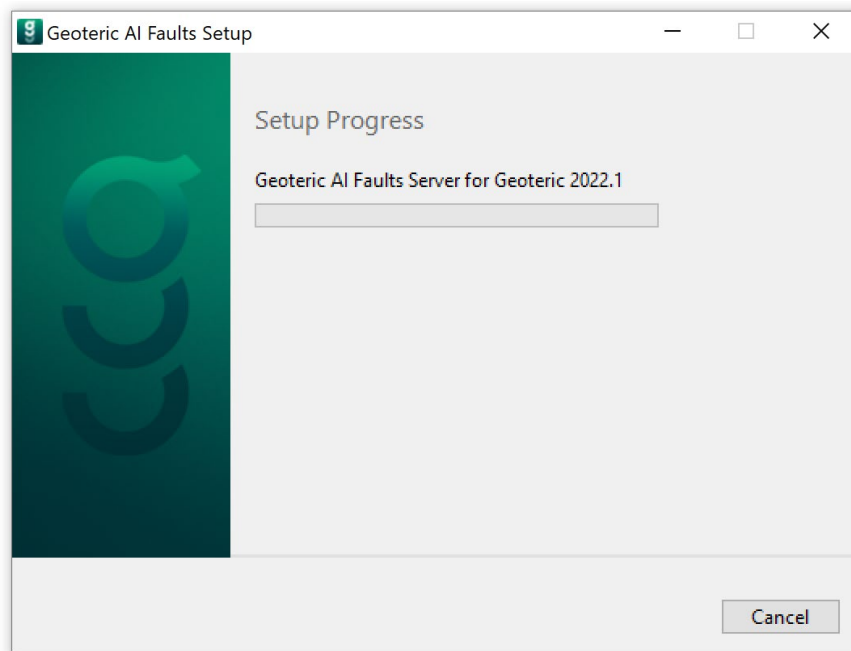
Tick the box to accept the terms and conditions of the License Agreement

There is an **Options** button to see the default installation location as shown below or to select a different installation location.

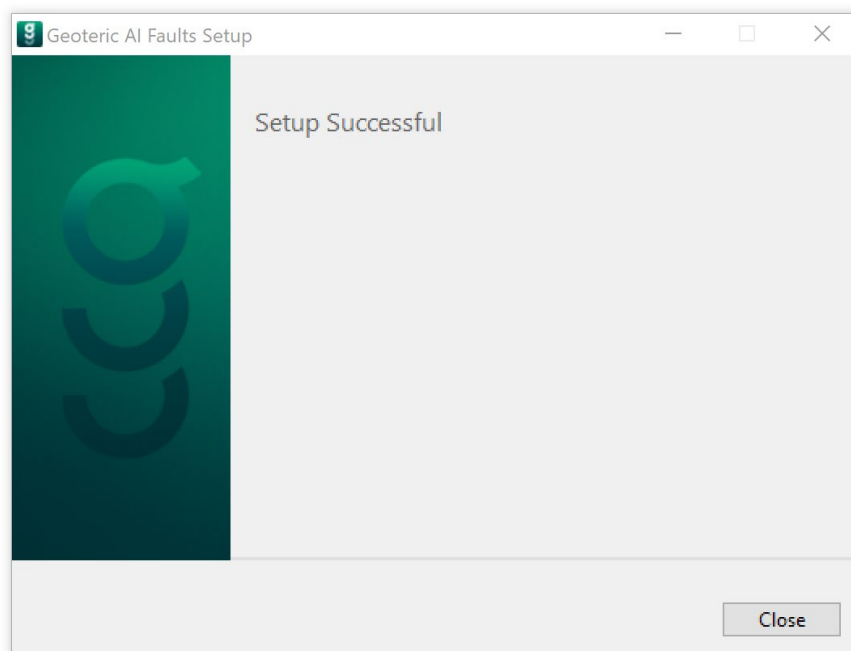


Click **OK** to go back to the 1st Screen. Then Click **Install** to begin the installation.

Note that administrator privileges will be required at this point to install the Geoteric AI Faults Server.



The installation will complete at which point the following screen will be presented.



Click "Close" to complete the installation.

The Geoteric AI Faults server will be available on initiation of the required Geoteric AI Faults – 2D Network or Geoteric AI Faults – 3D Networks functionality within Geoteric, or when manually selecting the server to start from within Geoteric.

Uninstall

To uninstall the Geoteric AI Faults Server, either go to Add or Remove Programs (Apps & features) from the start menu or go into the Control Panel > Programs and Features and uninstall the “**Geoteric AI Faults Server for Geoteric 2022.1**” from the program list.

Note that administrator privileges will be required to uninstall Geoteric AI Faults Server.

Trouble Shooting

Versions must be consistent between both Geoteric and Geoteric AI Faults Server; otherwise, the AI Fault processing will not function. This is true between any minor patch versions (e.g. .1, .2 or .3 etc) or major (e.g. 2020, 2021 or 2022 etc) releases of Geoteric. See table below for examples.

Examples which do not work:

Do not install Geoteric **2021.1** and Geoteric AI Faults **2020.2** together.

Do not install Geoteric **2020.1** and Geoteric AI Faults **2021.2** together.

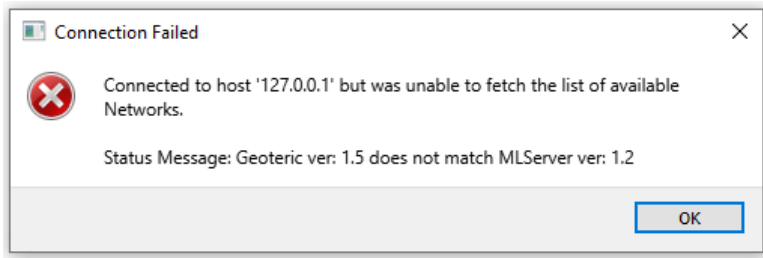
The table below indicates the correct and incorrect associations.

Geoteric	Geoteric AI Faults Server	Result
2020.1	2020.1	✓
2020.2	2020.2	✓
2021.1	2021.1	✓
2021.2	2021.2	✓
2022.1	2022.1	✓
2020.1	2020.2	✗
2020.2	2020.1	✗
2020.1	2021.1	✗
2021.1	2020.1	✗
2020.1	2021.2	✗
2021.2	2020.1	✗
2020.2	2021.1	✗
2021.1	2020.2	✗
2020.2	2021.2	✗
2021.2	2021.1	✗

When Geoteric 2021 AI Faults Server has not been updated

If Geoteric 2021 has been installed, but Geoteric 2020 AI Faults server remain without an upgrade, then the versions will throw a mismatch error when AI Faults is processed.

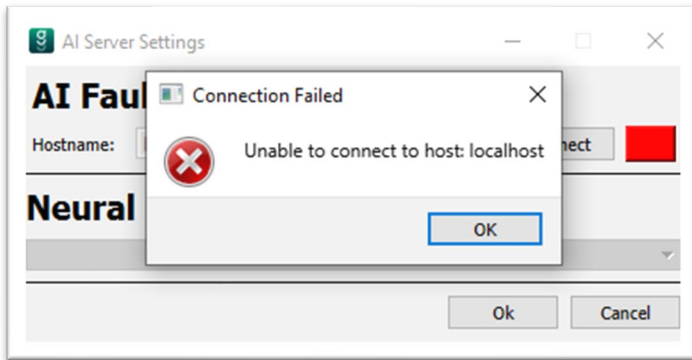
The same is true between a mismatch of any minor patch versions or major releases of Geoteric.



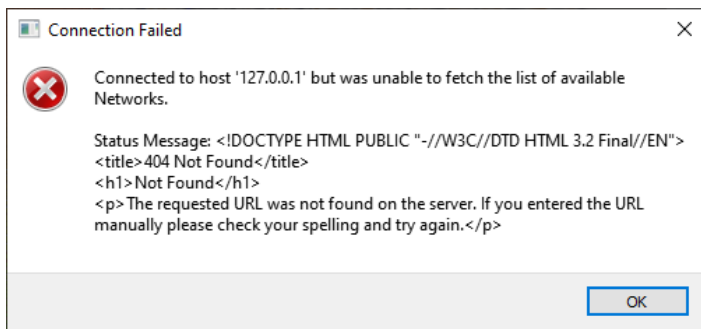
When Geoteric 2021 AI Faults is installed, but Geoteric 2020 has not been updated

If Geoteric 2021 AI Faults server has been installed, but Geoteric itself has not been updated to Geoteric 2021, then the AI Faults process will throw an error as shown below.

The same is true between a mismatch of any minor patch versions or major releases of Geoteric.



Example with Geoteric 2020.2 and Geoteric AI Faults 2021.1

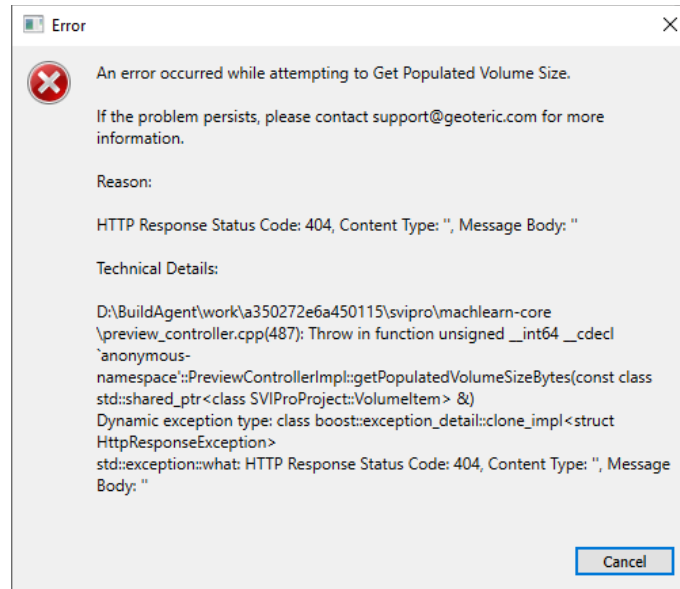


Example with Geoteric 2020.2 and Geoteric AI Faults 2021.2

The AI Faults process is contained within Geoteric and must have a single GPU available with sufficient memory and of sufficient CUDA compute level (see separate recommended specifications documents.) This GPU should not be used for Geoteric CUDA processing or any graphics processing.

When Geoteric 2021.1 AI Faults is installed, and Geoteric 2021.2 is installed

If Geoteric 2021.1 AI Faults Server has been installed, and Geoteric 2021.2 is installed, then the AI Faults – 3D Networks process will throw an error as shown below.



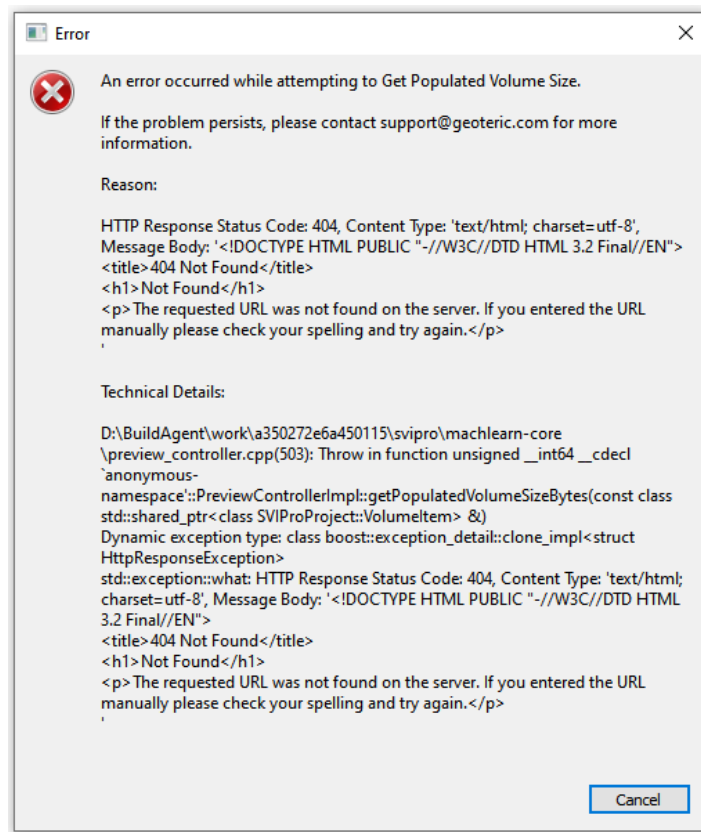
Example with Geoteric 2021.2 and Geoteric AI Faults 2021.1

When Geoteric 2021.2 AI Faults is installed, and Geoteric 2022.1 is installed

Geoteric 2022.1 has been made more robust in that the AI Fault Server 2021.2 may function when installed together with Geoteric 2022.1 and the Geoteric Process Manager however upgrades such as to TensorFlow 2 and new networks will not be available.

When Geoteric 2021.1 AI Faults is installed, and Geoteric 2022.1 is installed

Geoteric 2022.1 will not run 3D AI networks even when the Geoteric Process Manager is installed since the Geoteric AI Faults Server 2021.2 is not compatible with the Geoteric Process Manager or Geoteric 2022.1



Example with Geoteric 2022.1 and Geoteric AI Faults 2021.1