

MSI Installation: Geoteric Link for Petrel 2024

Prerequisites:

- * Petrel installed (Current supported versions are 2021, 2022, 2023 and 2024)
- * Geoteric installed
- * Valid Geoteric license

The Geoteric Link for Petrel 2024 is tested with Petrel 2024.1. Visual Studio 2013 is required for the Link for Petrel 2024.

To uninstall a previous **MSI installation** of the Geoteric Link to Petrel, go into the Control Panel > Programs > Programs and Features and uninstall the “Geoteric Link for Petrel 20xx” from the program list.

To uninstall a previous **PIP installation** of the Geoteric Link for Petrel, go into Petrel and go to Help > Plug-in Manager. Please note that Petrel will need to be restarted to uninstall the Plug-in completely.

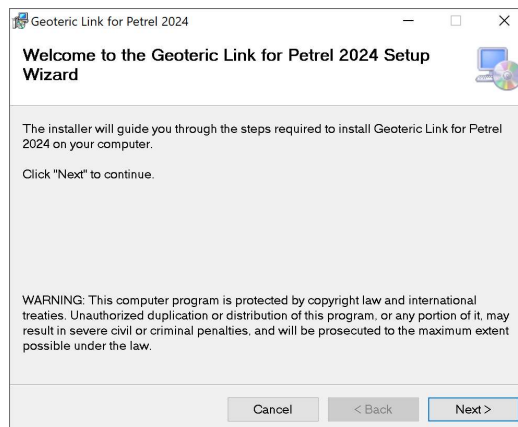
Note that administrator privileges will be needed to install or uninstall the Geoteric Link for Petrel.

Installation

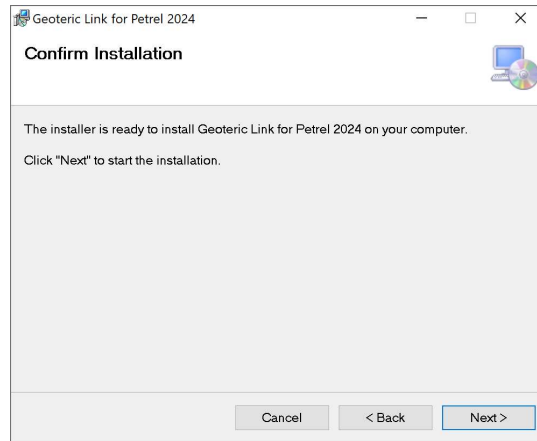
Browse to the Geoteric installation folder. The default path for the installation is set to be:

C:\Program Files\Geoteric\Geoteric 20XX.X

Now open the “Link-for-Petrel” folder and open the MSI folder that relates to the version of Petrel you’re using and run the installer to start the installation wizard.



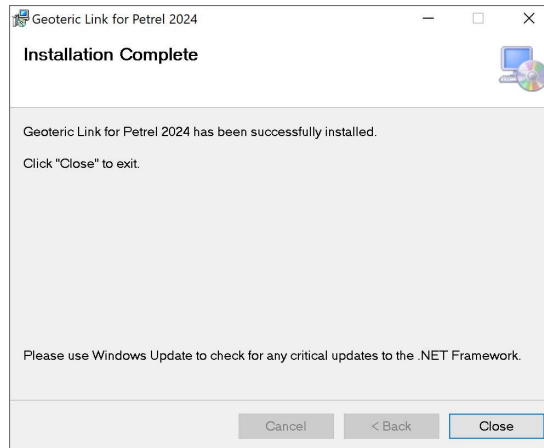
Click “Next”.



Click “Next” to Confirm Installation.

Note that administrator privileges will be required at this point.

The progress bar will show during installation as the Geoteric Link for Petrel is installed.



Click “Close” to complete the installation.

⚠ Do not have more than one instance of Geoteric open at one time during the transfer of objects between projects, since this may result in objects transferring to the wrong project.

Uninstall

To uninstall any version of the Geoteric Link for Petrel, go into the Control Panel > Programs and Features and find “Geoteric Link for Petrel 20xx.x”, where xx.x denotes the year and version, select and then uninstall it from the program list.

Following the progress bar which shows the progress of the uninstall operation, the Geoteric Link for Petrel will be uninstalled.

Note that administrator privileges will be required to uninstall the Geoteric Link for Petrel.