

PIP Installation: Geoteric Link for Petrel 2024

Prerequisites:

- * Petrel installed (Current supported versions are 2021, 2022, 2023 and 2024)
- * Geoteric installed
- * Valid Geoteric license

The Geoteric Link for Petrel 2024 is tested with Petrel 2024.1. Visual Studio 2013 is required for the Link for Petrel 2024.

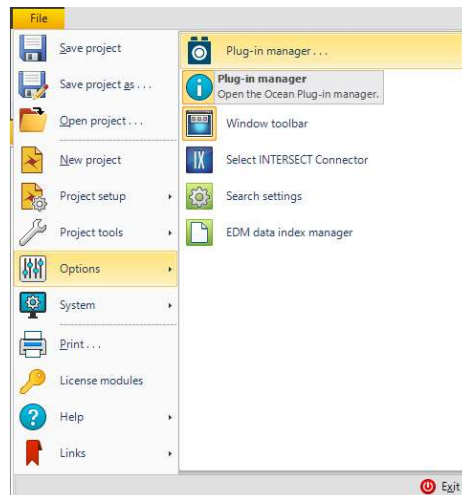
To uninstall a previous **MSI installation** of the Geoteric Link to Petrel, go into the Control Panel > Programs > Programs and Features and uninstall the “Geoteric Link for Petrel 20xx” from the program list.

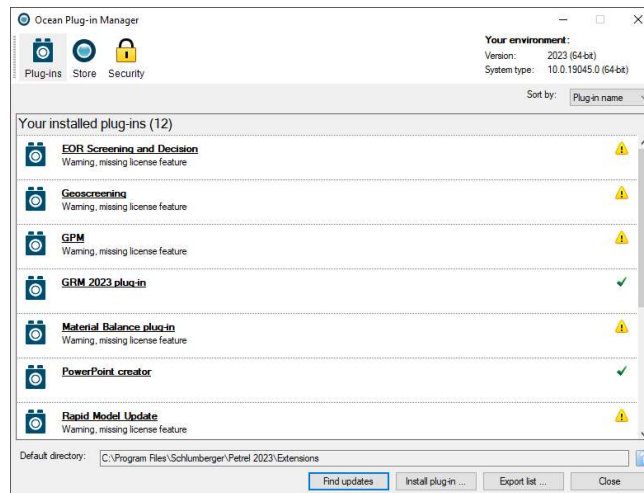
To uninstall a previous **PIP installation** of the Geoteric Link for Petrel, go into Petrel and go to Help > Plug-in Manager. Please note that Petrel will need to be restarted to uninstall the Plug-in completely.

Note that administrator privileges will be required to install the Geoteric Link for Petrel.

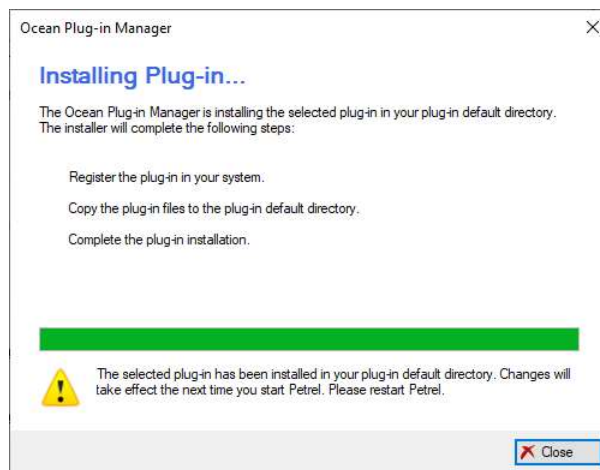
Installation

Open Petrel and select the “File”, “Options” menu and select “Plug-In Manager”.

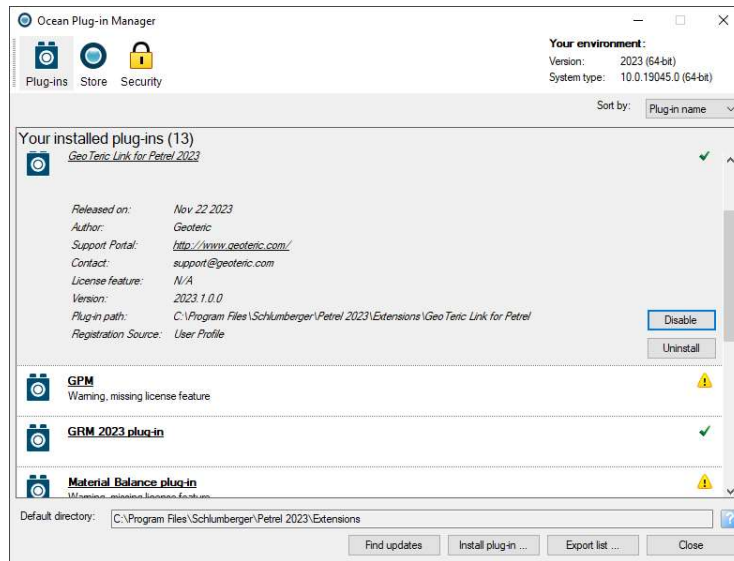
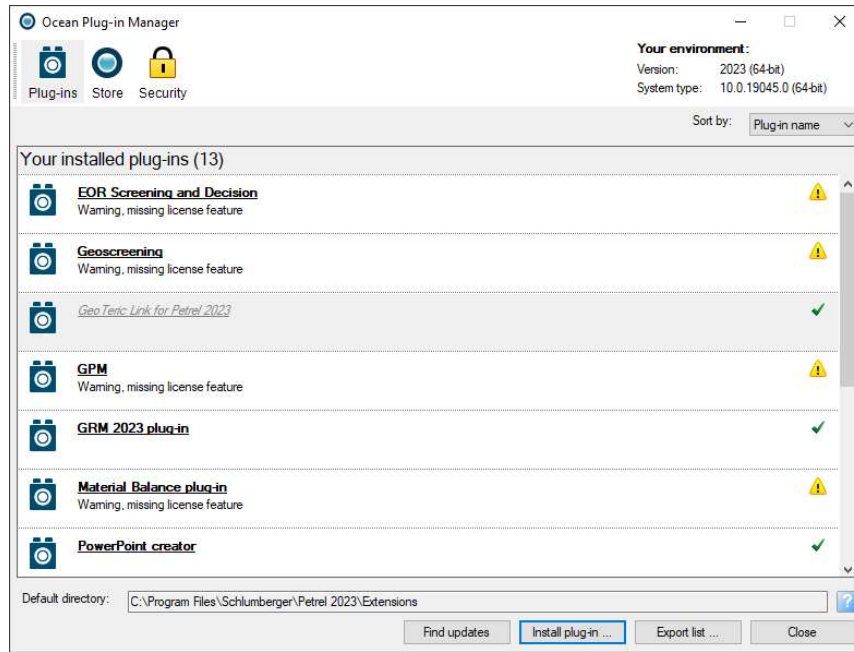




Click on the “Install plug-in ...” button and browse to the Geoteric installation folder. By default, this can be found at C:\Program Files\Geoteric\Geoteric 20XX.X and open the “Link-for-Petrel” folder. Open the PIP folder that relates to the version of Petrel you are using and run the installer to start the installation.

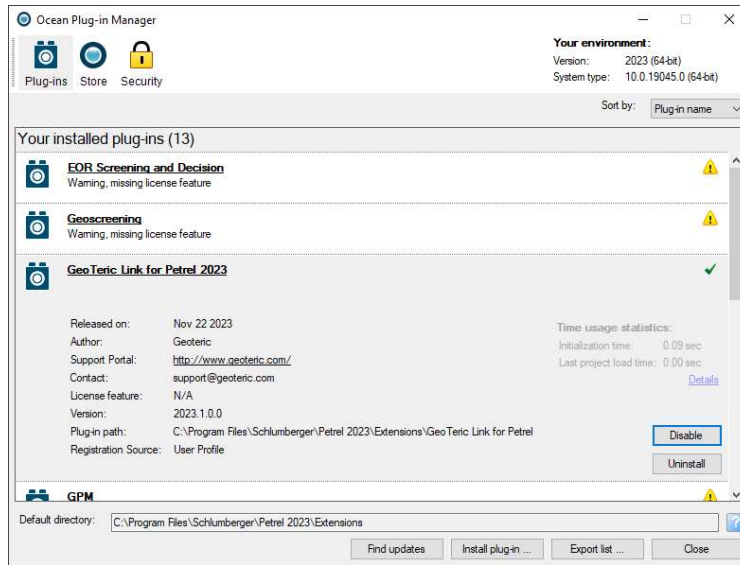


Administrator privileges will be required to install the Geoteric Link for Petrel. Please note that Petrel needs to be restarted before the link is available to use. Images shown below are prior to a re-start. The italics show that a restart is required.



Re-open Petrel for the installation to fully complete.

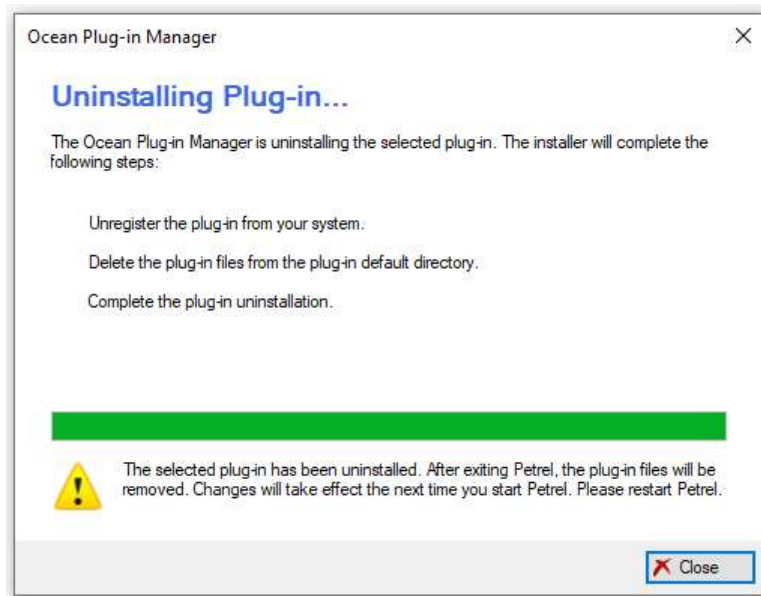
Image below shows the link after the restart.



⚠ Do not have more than one instance of Geoteric open at one time during the transfer of objects between projects, since this may result in objects transferring to the wrong project.

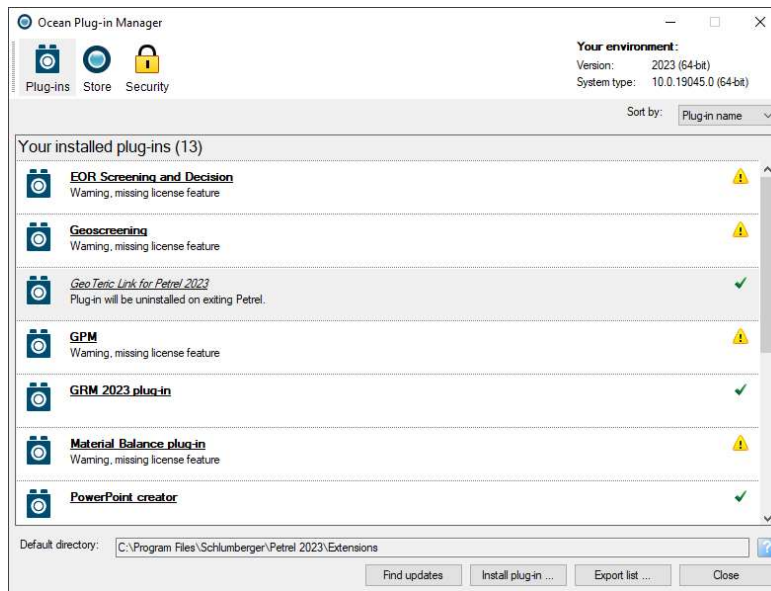
Uninstall

Open Petrel and select the “File”, “Options” menu and select “Plug-In Manager”. Select the Geoteric link for Petrel and then the “Uninstall” button.



On completion, the Geoteric Link for Petrel will be shown in italics in the Plug-in Manager and Petrel will need to be closed for the full uninstall to complete.

Administrator privileges will be required to uninstall the Geoteric Link for Petrel once Petrel has been closed.



Plug-in Manager shows the Geoteric Link for Petrel in italics and that the uninstall will complete once Petrel is closed. Please re-open Petrel for the installation to fully complete.