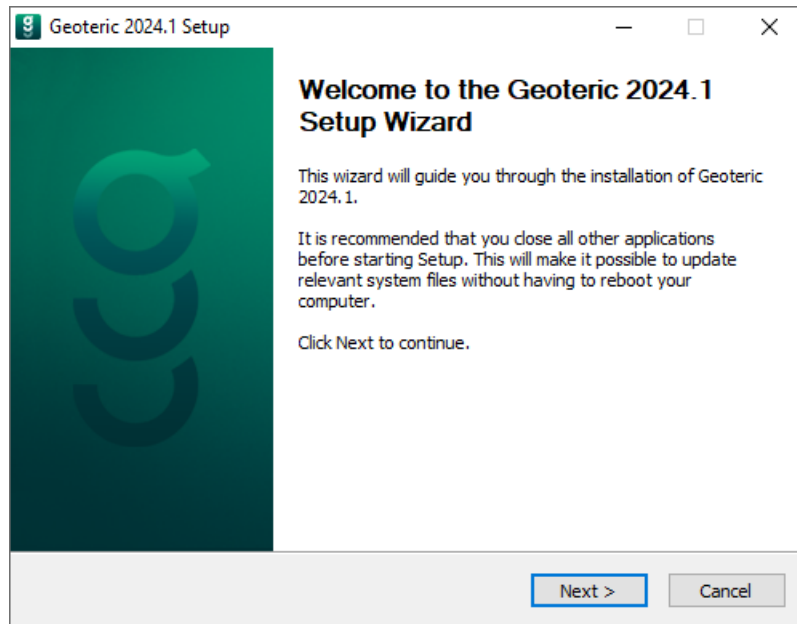


Geoteric Installation Guide

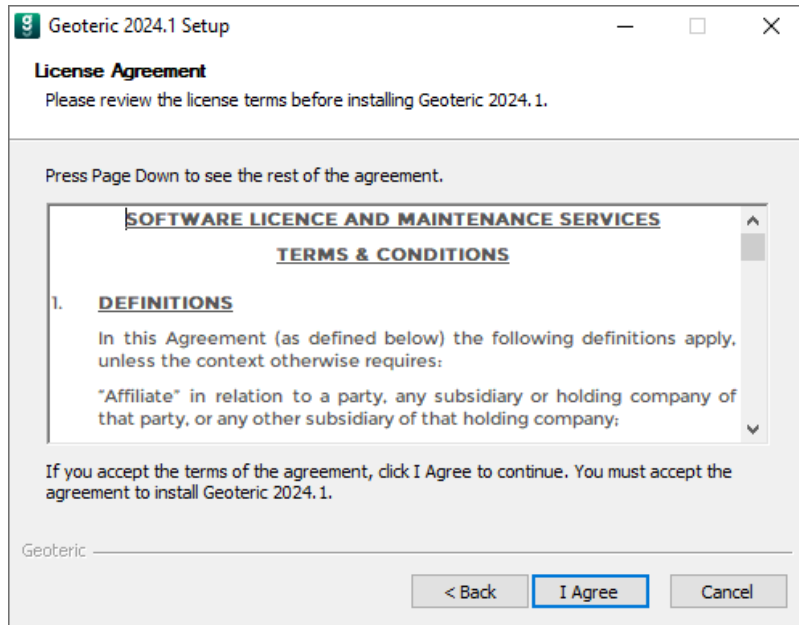
Installation

After downloading the Windows exe, double click on it to begin the installation wizard.

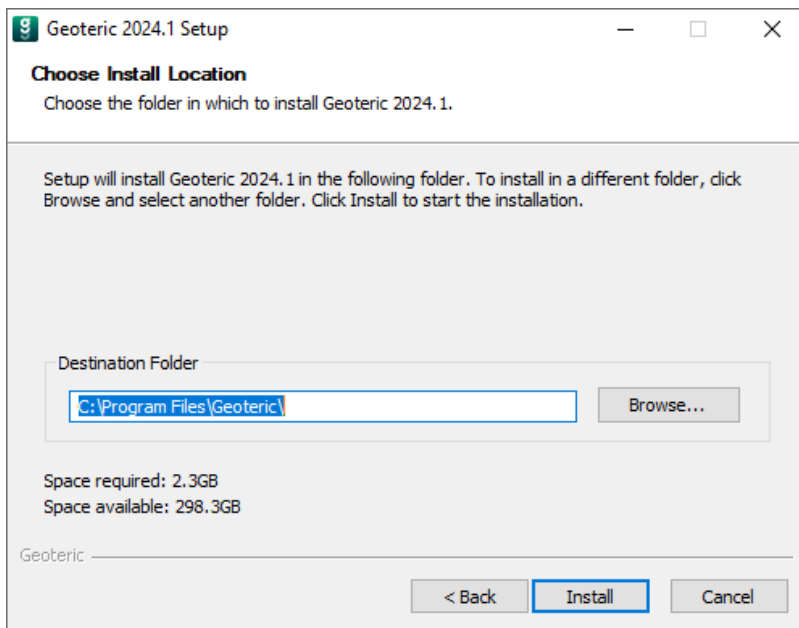


Note that administrator privileges will be required to install Geoteric.

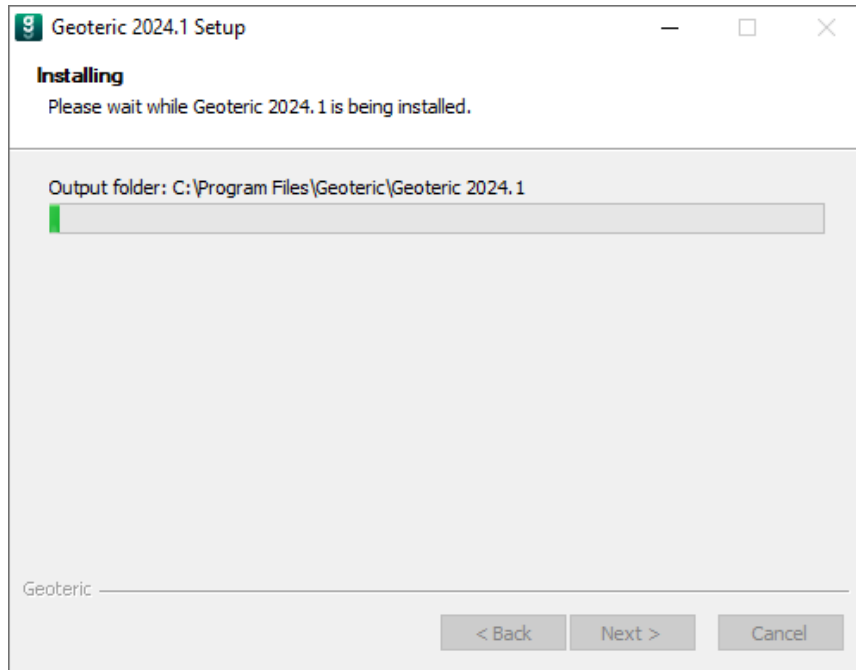
Click "Next>" for the License Agreement.



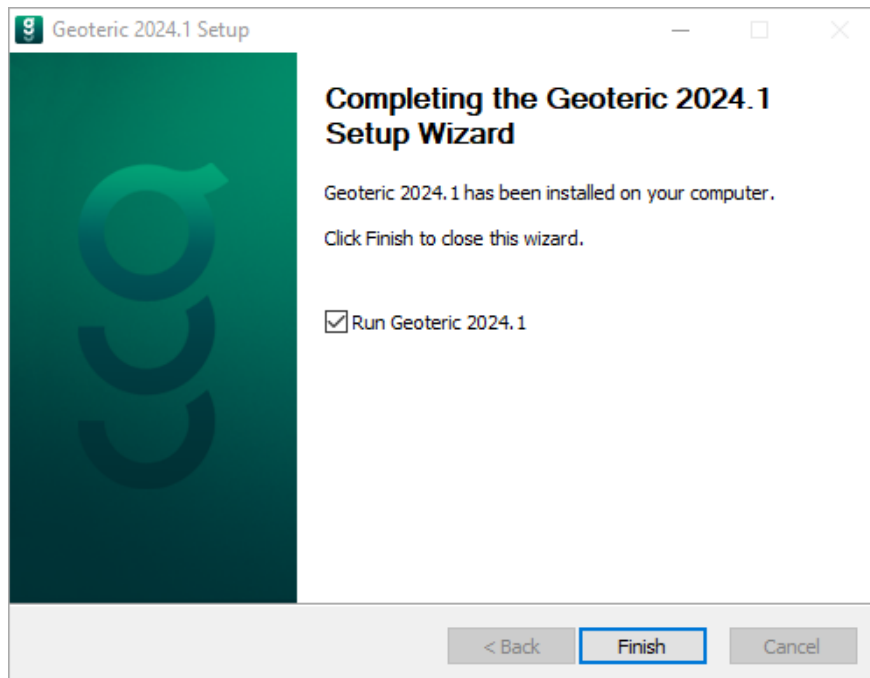
Click "I Agree" to agree to the license terms.



Click "Install" to install Geoteric to the default location or you can choose to install it in a different location by pressing "Browse..." and selecting a new location.



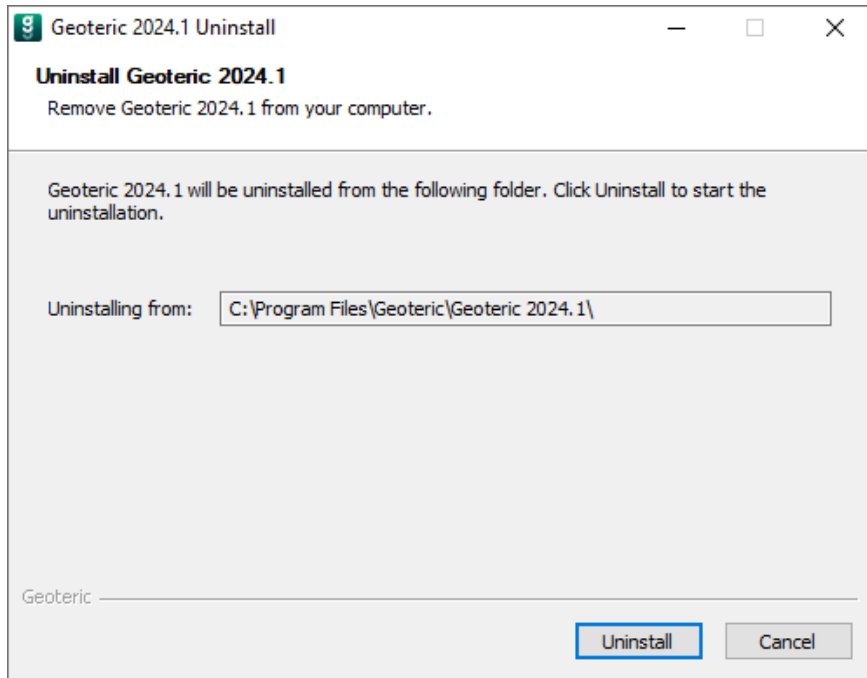
You will see the progress of the installation as files are copied.



Click "Finish" to complete the installation.

Uninstall

To uninstall Geoteric, go into the Control Panel > Programs and Features and find “Geoteric 2024.1”, select and then uninstall it from the program list.



Select the correct location where Geoteric was installed, and then select “Uninstall”. Once the progress bar completes, Geoteric will be uninstalled.