

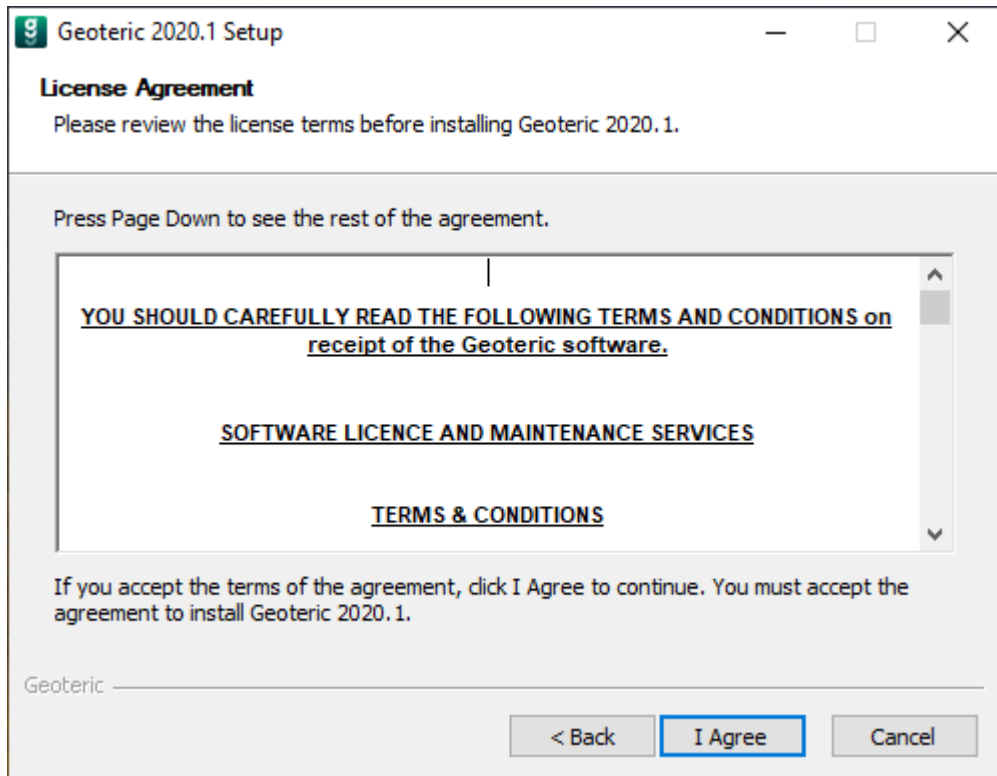
Geoteric Installation Guide

Windows Installation

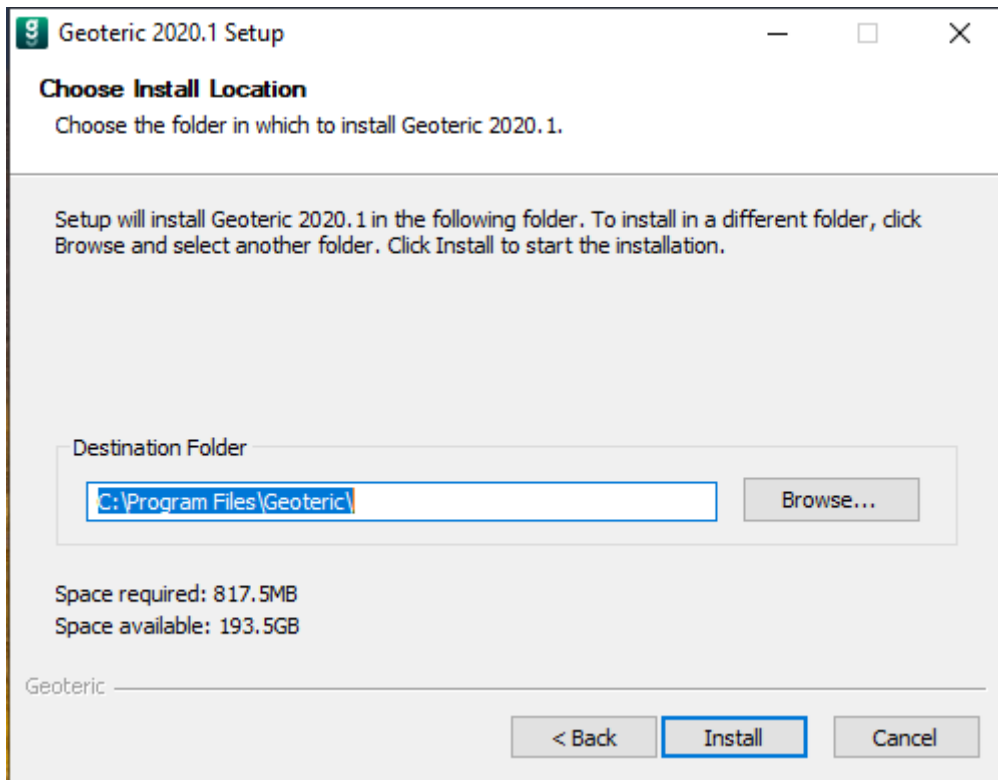
After downloading the Windows exe, double click on it to begin the installation wizard.



Click "Next>" for the License Agreement.

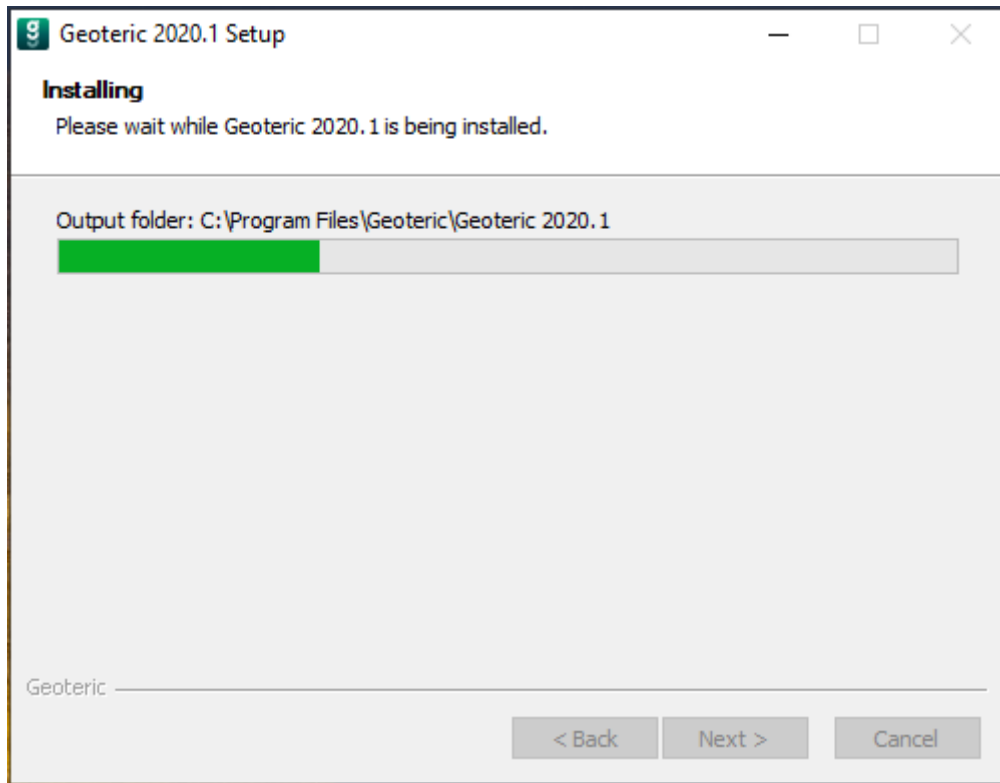


Click "I Agree" to agree to the license terms.

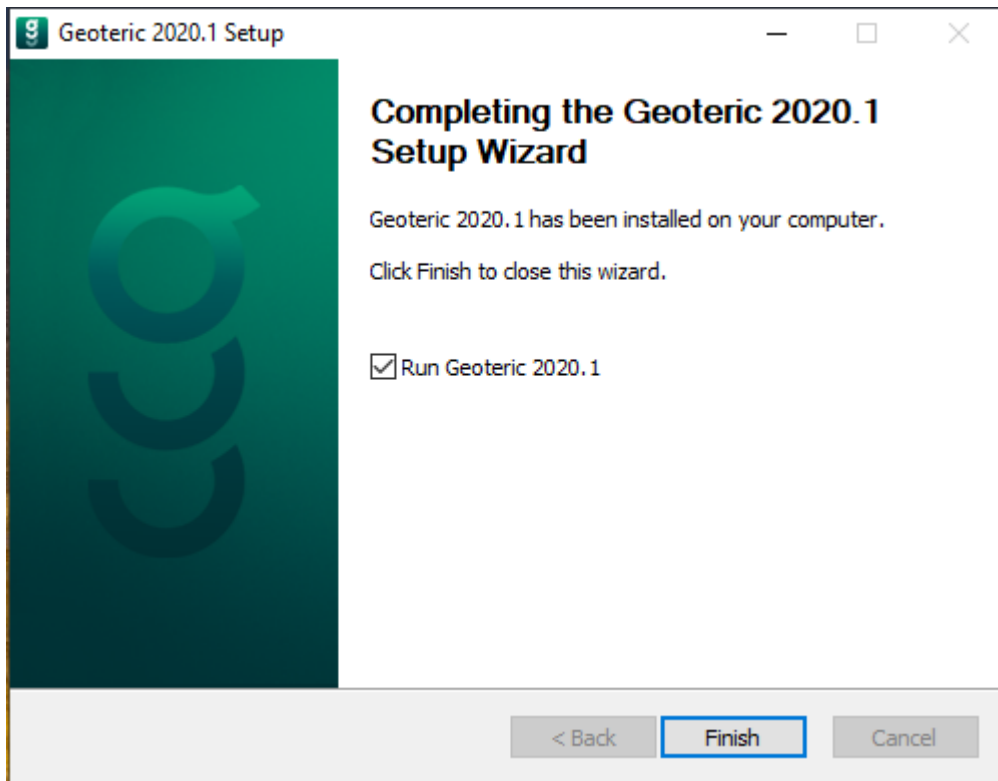


Click “Install” to install Geoteric to the default location or you can choose to install it in a different location by pressing “Browse...” and selecting a new location.

For information on starting and stopping the Collaborative AI service, please see separate troubleshooting document.



You will see the progress of the installation as files are copied.



Click "Finish" to complete the installation.