

PIP Installation of the Link for Petrel

Prerequisites:

- * Petrel installed (Current supported versions are 2015, 2016, 2017 and 2018)
- * GeoTeric installed
- * Valid GeoTeric license

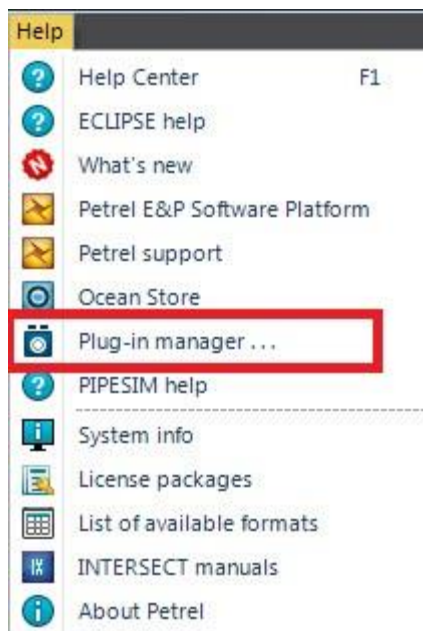
Please ensure any previous versions of Link for Petrel have been uninstalled first.

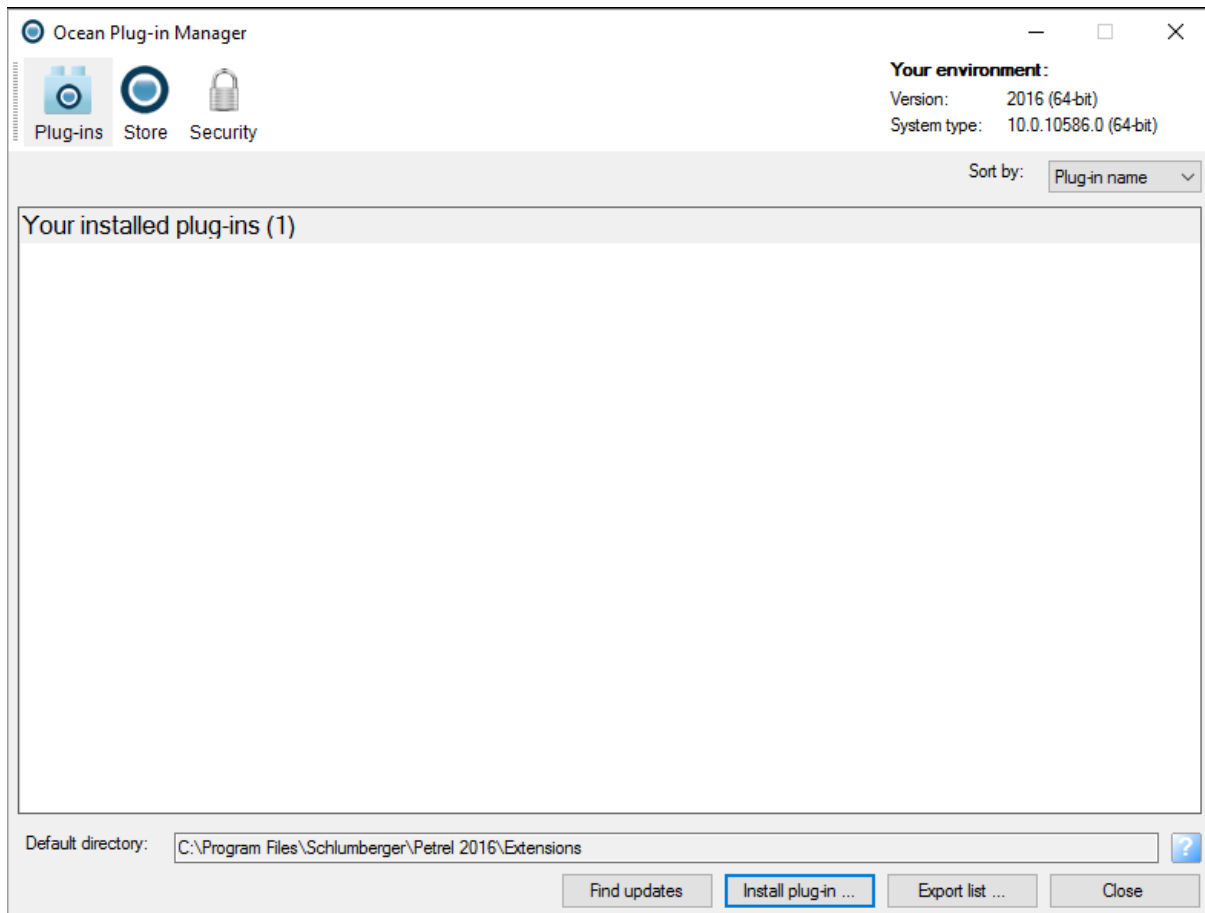
To uninstall a previous MSI installation of the Link to Petrel you will need to go into the Control Panel > Programs and Features and uninstall the link from the program list.

To uninstall a previous PIP installation of the Link to Petrel you will need to go into Petrel and go to Help > Plug-in Manager. Please note that Petrel will need to be restarted to completely uninstall the Plug-in.

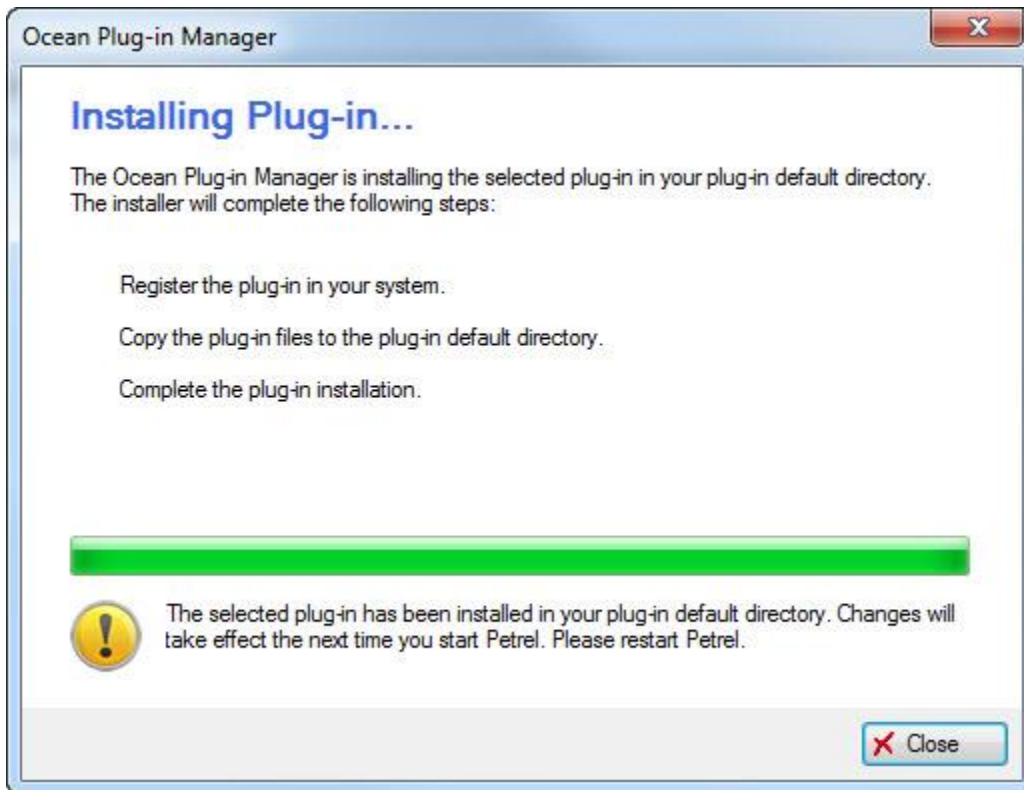
Installation

Open Petrel and select the Help menu and select Plug-In Manager

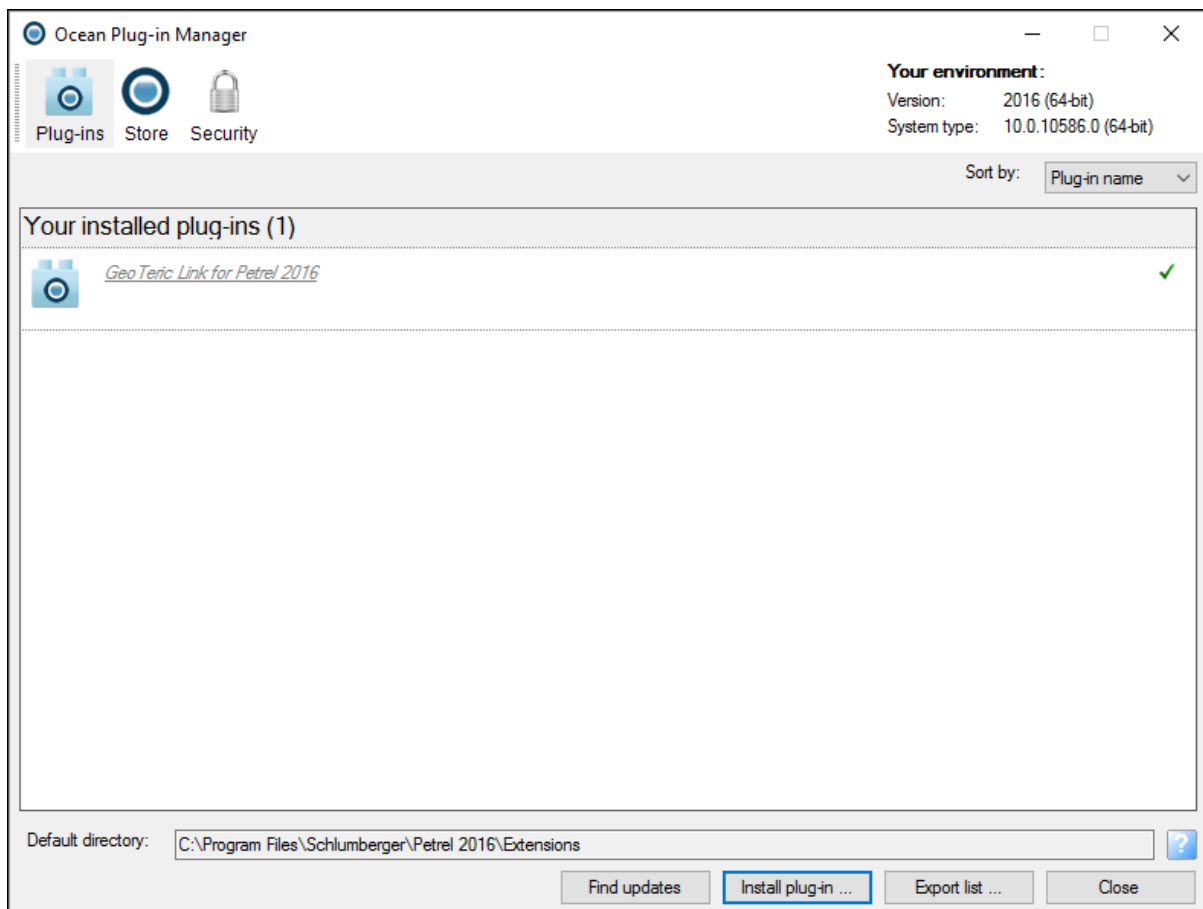




Click on Install Plug-in button and browse to the GeoTeric installation folder. By default this can be found at C:\Program Files\ffA\GeoTeric 20XX.X\ or C:\Program Files\GeoTeric\GeoTeric 20XX.X\ and open the Link for Petrel folder. Open the PIP folder that relates to the version of **Petrel** you need the link for and run the installer to start the installation.



Click close to complete the installation.



Please note that Petrel now needs to be restarted before the link is available to use.

