

PIP Installation: Geoteric Link for Petrel

Prerequisites:

- * Petrel installed (Current supported versions are 2018, 2019, 2020 and 2021)
- * Geoteric installed
- * Valid Geoteric license

Please ensure any previous versions of the Link for Petrel have been uninstalled first.

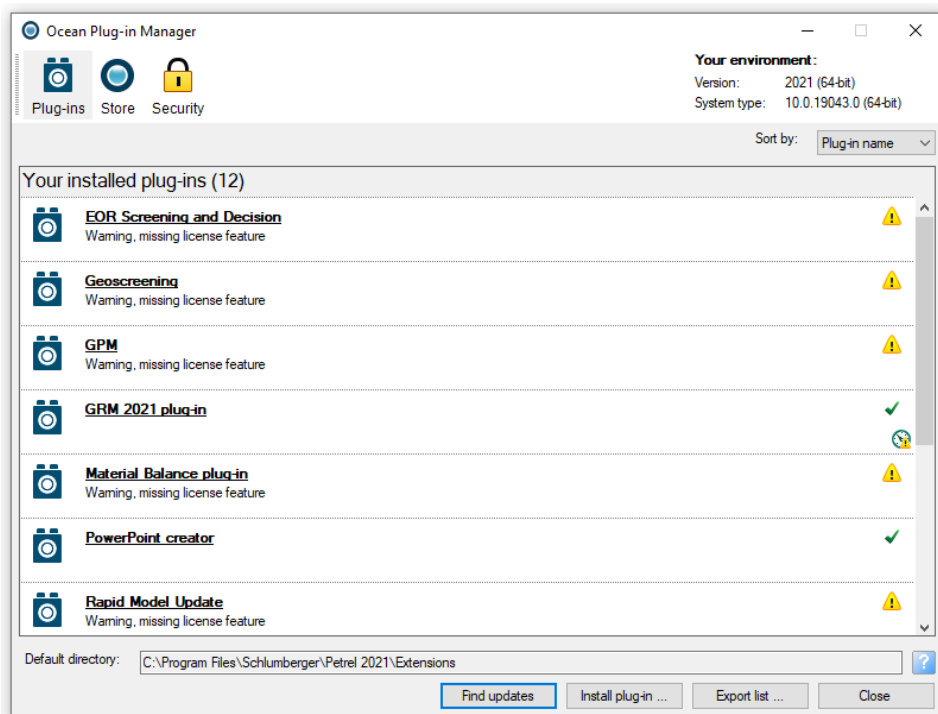
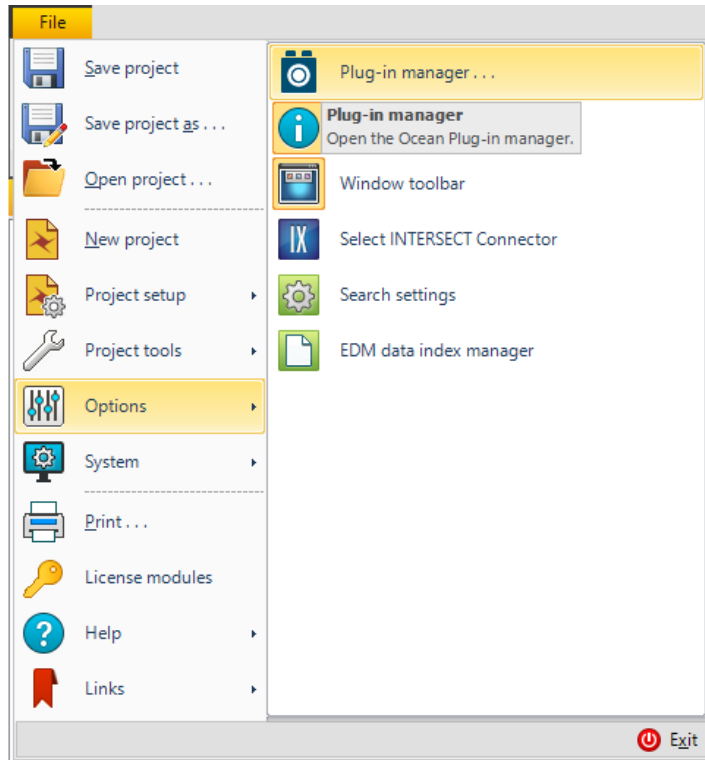
To uninstall a previous **MSI installation** of the Geoteric Link to Petrel, you will need to go into the Control Panel > Programs > Programs and Features and uninstall the “Geoteric Link for Petrel 20xx” from the program list.

To uninstall a previous **PIP installation** of the Geoteric Link for Petrel, you will need to go into Petrel and go to Help > Plug-in Manager. Please note that Petrel will need to be restarted to uninstall the Plug-in completely.

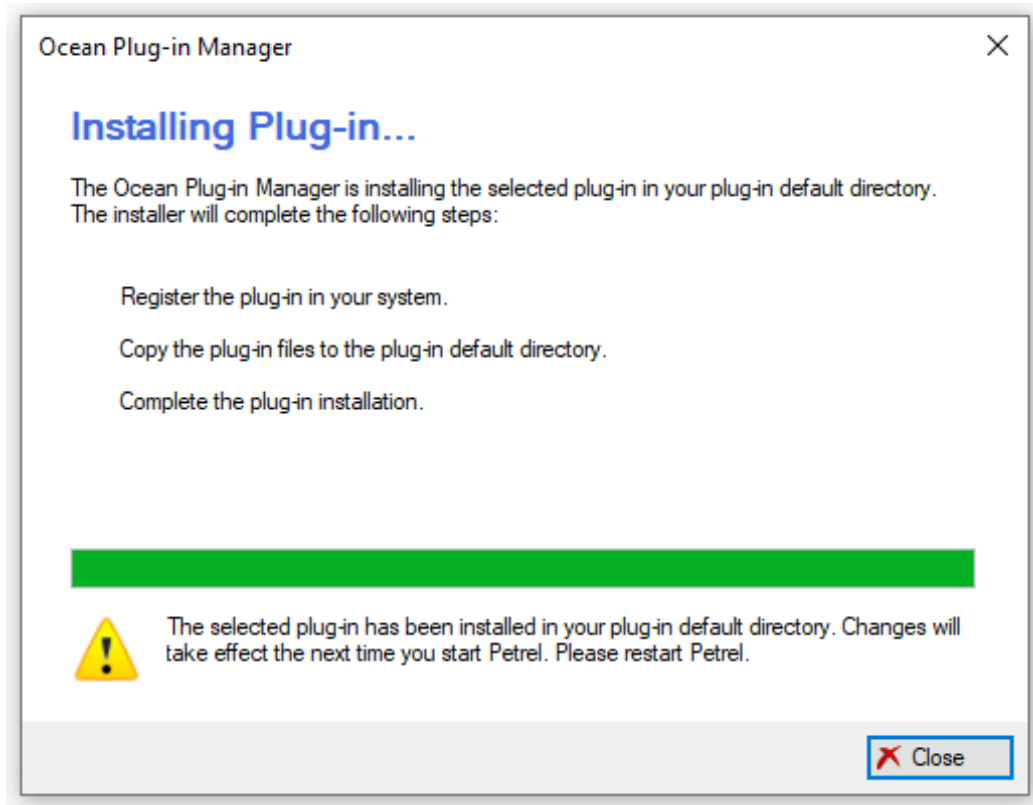
Note that administrator privileges will be needed to install the Link for Petrel.

Installation

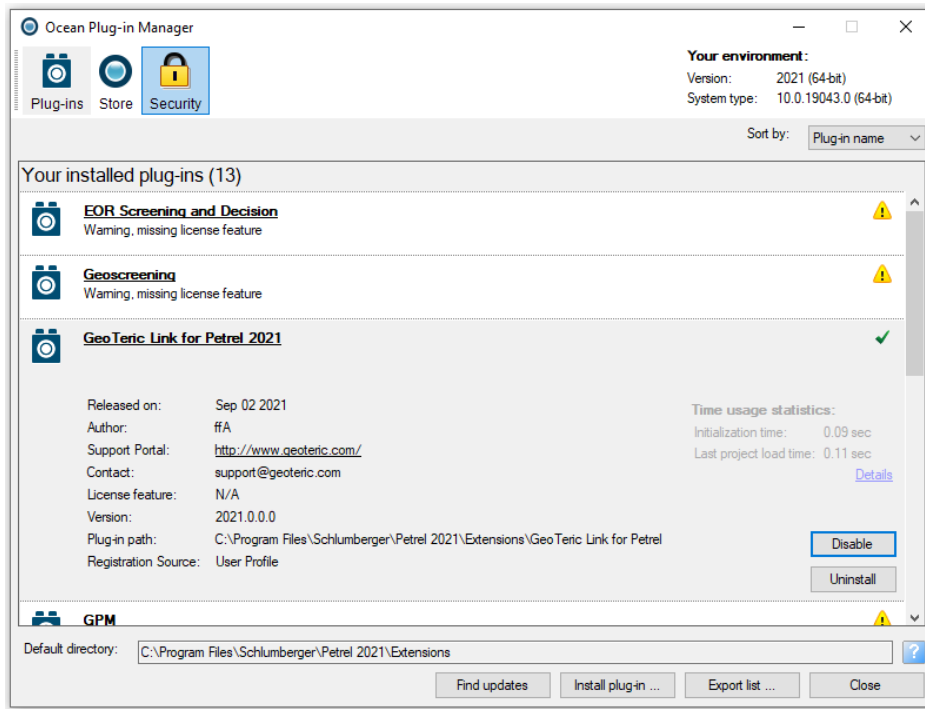
Open Petrel and select the “File”, “Options” menu and select “Plug-In Manager”.



Click on the “Install Plug-in” button and browse to the Geoteric installation folder. By default, this can be found at C:\Program Files\ffa\Geoteric 20XX.X\ or C:\Program Files\Geoteric\Geoteric 20XX.X\ and open the “Link-for-Petrel” folder. Open the PIP folder that relates to the version of Petrel you are using and run the installer to start the installation.



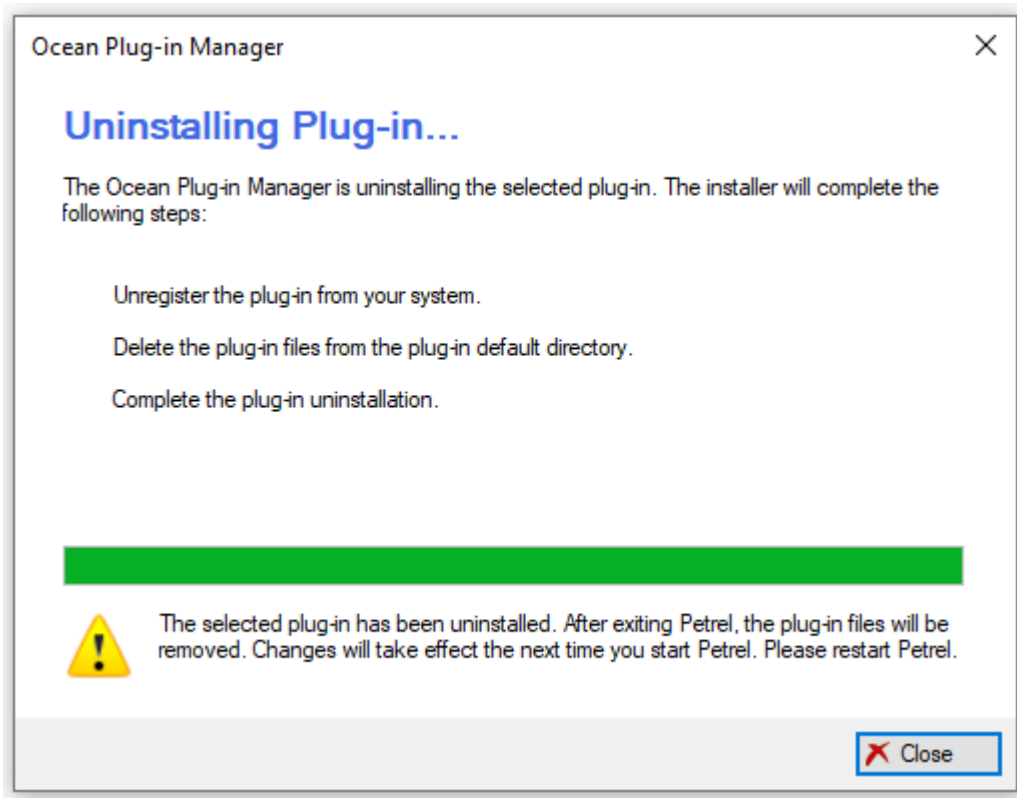
Administrator privileges will be needed to install the Link for Petrel.



Please note that Petrel now needs to be restarted before the link is available to use.

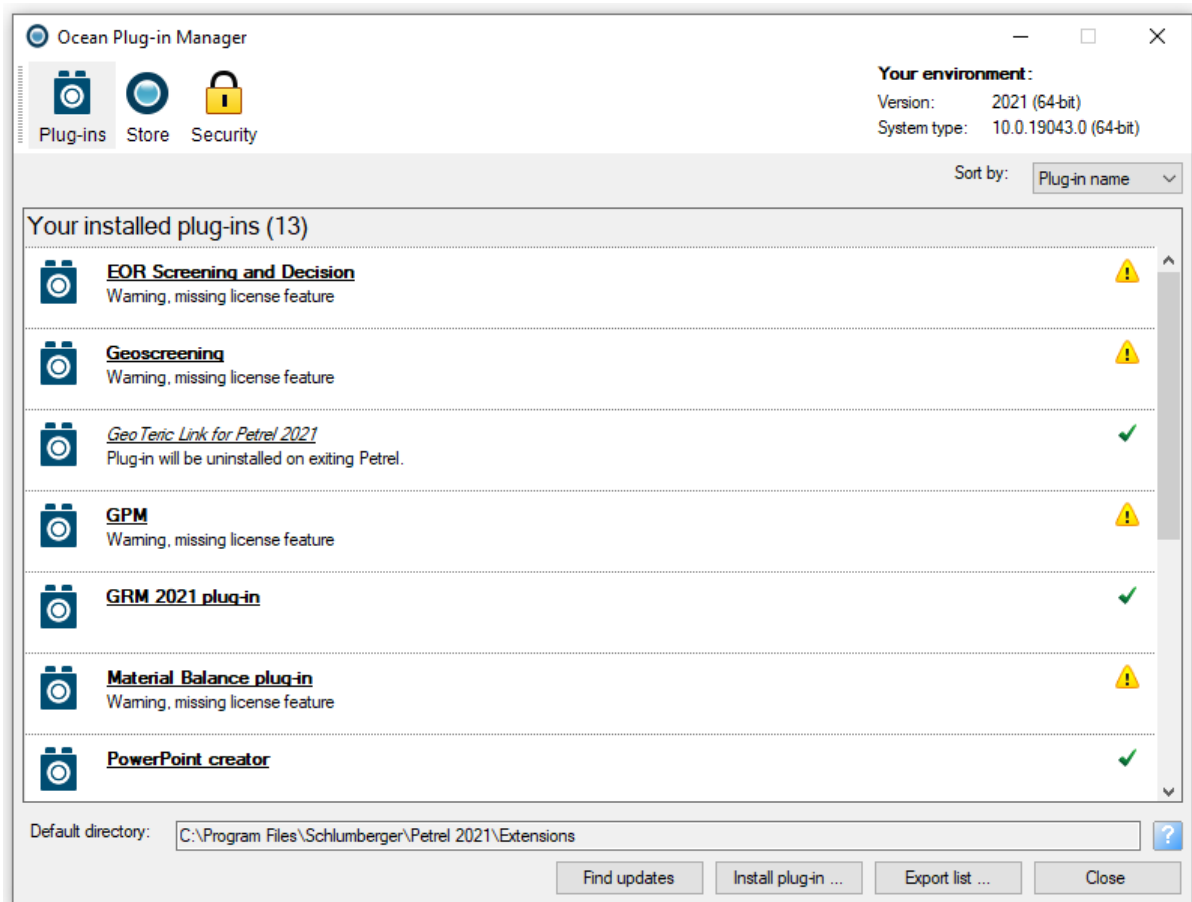
Uninstall

Open Petrel and select the “File”, “Options” menu and select “Plug-In Manager”. Select the Geoteric link for Petrel and then the “Uninstall” button.



On completion, the Link for Petrel will be shown in italics in the Plug-in Manager and Petrel will need to be re-started for the full uninstall to complete.

Note that administrator privileges will be needed to uninstall the Link for Petrel once Petrel has been closed.



Plug-in Manager shows the Link for Petrel in italics and that uninstal will need Petrel to be closed.